



Diary Dates

NEWSLETTER



Pupil attendance to date: 94.6%. Target 97%

13th June 2025

Mon 16th June

Beginners chess with Colin (Yrs 1-6)

Summer sports club (Yrs 1-4) 3-4pm

Tues 17th June

Mental Health Support workshop at 2pm in school hall All welcome

Intermediate Chess club Yrs 1-6 3-4pm

Racket Sports Years 3-6 3-4pm

Irish Dancing 5-8pm

Wed 18th June

Athletics Club 3-4pm (invited children only)

Lego club Years 1-4 3-4pm

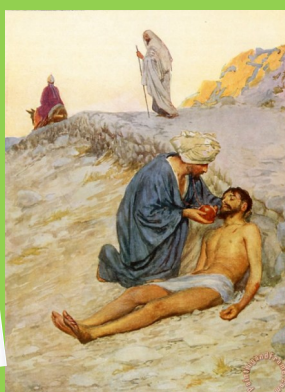
Dear Parents and Carers,
Today we had a whole school assembly thinking about The Good Samaritan. This famous parable tells us about a traveller, assumed to be Jewish, who is stripped of his clothing and beaten before being left half-dead along the road. A Jewish priest and a Levite ignore the man. Finally, the Samaritan comes upon the traveller. Despite Jews and Samaritans being hostile to each other, the Samaritan aids the wounded man.

We discussed how we should show love and look after people regardless of our differences. We also discussed how you should 'Love your neighbour as yourself.' Luke 10:27. This golden rule teaches us that we should treat others the same way that we wish to be treated.

We also discussed that some people can be discriminated against because of their race, customs, traditions, language or accent amongst other things and that this is **not acceptable**. We also discussed what prejudice and racism can look like and how important it is to tell a responsible adult if we see or hear racism.

Have a lovely weekend.

Mrs Phaure



Photographs on school premises

It has come to my attention, this week, that a parent has been taking photographs on school premises and sharing on social media. Can I kindly ask that you **DO NOT** take photos on the school premises. Thank you for your continued support.
Mr Doherty



Toy donation and bottle donation days

Please remember your toy donations (Fri 27th June) and your bottle donations (3rd July). The children can wear their own clothes on both days.





NEWSLETTER



Pupil attendance to date: 94.6%. Target 97%

13th June 2025

Thurs 19th June

Summer Sports club
Years 3-6
3-4pm

Singing and signing club
Years 1-4
3-4pm

Rounders Tournament at Ryefield School from 4.15pm

Fri 20th June

Holy Communion

Congratulations to our children who will make their First Holy Communion this Sunday. We will be thinking of you all on your very special day:

Wenxin Chen
Calley Ann Atkins
Emilia Buchalik
Oskaran Hind
Emma Kulina
Elliot Pokrzywniak
Cornelia Piszczek
Martina Meli



Attendance

Attendance this week was 94.6%

This week's top class for attendance with 100% was pm Nursery. Well done Nursery! What a wonderful achievement.



Chess tournament

Good luck to our chess squad who will be competing in the Hiliingdon and Ealing District Chess tournament this Sunday in school.





NEWSLETTER

13th June 2025

GYPSY, ROMANY, TRAVELLER AWARENESS MONTH ART COMPETITION WINNERS.

I was so proud this week to find out that two pieces of work submitted by our children were placed 2nd and 3rd in the under 12 section of this years Gypsy, Romany and Traveller Month Art Competition. David and Michael Hufkie's work depicting a horse and cart from Romania came 3rd and Maryanne's piece about her First Holy Communion came 2nd. Both pieces will be exhibited at City Hall on 27th June. Well done children. We are very proud of you.





NEWSLETTER

13th June 2025

YEAR 5 AT LONGRIDGE

Year 5 had a wonderful time today at Longridge Outdoor Activity Centre in Marlow. The children took part in dragon boat, climbing wall and raft building. Thank you to all the staff who accompanied the children and to the parent volunteers who made the trip possible.





St Catherine Catholic Primary School

FSCS News



13th June 2025

COMMITTEE NEWS



The FSCS committee would like to say a sincere thank you to Jayne for her long standing commitment to the PTA for 16 years. Jayne will leave us at the end of this academic year.



Donation days...

Toy donations
Thursday 3 July



Bottle donation
Friday 27 June



Please remember that the children can wear own clothes in exchange for a bottle and toy on the donation days for the school fayre. Can we ensure that any toys that are donated are either new or in immaculate condition.



St Catherine Catholic Primary School

FSCS News



13th June 2025

CALLING ALL VOLUNTEERS!

We are just **three weeks** away from our Summer Fayre on **Sunday 6th July**. Can you come along and help us make this a great day!



We still need volunteers to help prepare for the summer fayre on Friday 4th July between 10-12pm and help set up and run stalls during the fayre including:

VOLUNTEER

- Tin Can Alley
- Beat the goalie, Pitch and Putt
- Craft Stall
- Bouncy castle
- Face Painting

Please contact one of the FSCS representatives (via your WhatsApp Class Rep or on the playground) for more information.

Coming up...

Friday 4th July 2025
Preparations for Summer fayre (including folding raffle tickets), 10-12pm

Sunday 6 July 2025
Set up from 8am. Summer Fayre, 12-3pm
School playground

Wednesday 18 September 2025
FSCS Meeting, 7 pm, School Library





St Catherine Catholic Primary School

FSCS News



13th June 2025



Silent Auction



We are running our Silent Auction again at the Summer Fayre. We would like to take this opportunity to say a **Big Thank You** to all of the businesses and members of our local community who have kindly given us a prize for our silent auction or a donation. These are just some of the auction prizes you could bid on!

All Silent auction bids will be taken on Sunday 6th July between 12-2:45pm.



BLETCHLEY PARK



DAWS HILL
Vineyard

Good Time
GOLFIN

ROADNAGE - BUCKINGHAMSHIRE

AIRHOP




SCIENCEOXFORD



THE
**BATTLE OF
BRITAIN
BUNKER**



ST CATHERINE'S SUMMER FAYRE



Sunday 6th July
12:00–3:00pm

IN THE SCHOOL PLAYGROUND
MONEY LANE, WEST DRAYTON

£1 ENTRY
(CHILDREN FREE)

JOIN US FOR LOTS OF FUN!
ALL WELCOME!

- tombolas • fun games •
- fully licensed bar • BBQ
- food and cakes • silent auction
- glitter tattoos • face painting
- raffles • great shows and entertainment •
- music by Radio Hillingdon and much more!

SPONSORED BY



Oakwood
Estates





Pupil attendance to date: 94.6%. Target 97%

13th June 2025



This week we said goodbye to Mrs Fernandes who has supported our children in the classroom, lunch hall and breakfast club for the last 4 years. Mrs Fernandes will be leaving to study at University.

We thank her for her service and kindness to our children and wish her all the very best for the future.

Look Who's Talking

This week coming is the last week for the children to make their Look Who's Talking presentations.

I can tell you that there have been some wonderful entries. Thank you to our wonderful parents and carers for supporting the children with this.

The finalists from each phase will be chosen by Friday when we will announce the winners and invite their families to a special 'Look Who's Talking' assembly.



Mental health workshop

We will be holding an event to signpost parents to some of the many local providers of support for families. Our coffee afternoon will be on June 17th from 2pm. The local Community Interest Company, Incredibly Elev8ed, will give a short presentation about the free parenting courses that they offer. Our new mental health practitioner, Elinor (from MHST), will also be available to chat to parents. Hillingdon's Stronger Families and other services will also be represented. Please see poste on next page of newsletter.

Please keep the afternoon free!



Our next community Stay and Play event will be held on Saturday 28th June from 10am. Please share this with friends and family. We look forward to seeing you and your children there.



St Catherine Catholic Primary School and Nursery

*Our next community Stay and Play morning
for Nursery and Reception aged children
and siblings will be held on:*



Saturday 28th June

10am until 12 noon

This event is open to children children
currently attending our school and children in
the local community. If you have a questions
please contact our office:

office@stcatherine.co.uk

telephone: 01895442839

PARENT COFFEE MORNINGS AND WORKSHOPS JULY 2025

Challenging Behaviour Workshop

How to support your child with managing big emotions, following instructions, and behaviour that is challenging.

3rd of July at 2:15pm



Year 6 Transition to Secondary School

Supporting your child with worries and anxieties related to moving to Secondary School and how to prepare for this

10th July at 4:30pm

Sleep Hygiene Stay and Play

Tips on supporting your child if they have difficulty sleeping, bed time routine, and general tips on how to support your child over the summer holidays

17th July at 1:30pm



All workshops will take place at St Catherine's in the school hall

Even if these topics do not apply to you, please feel free to come along for further information on the Mental Health Support Team and how we may support you!

Our school prayer for June

Our prayer for June is the Glory Be. This is a prayer that all of our children should be able to recite off by heart.

The Glory Be



Glory

be to the



Father



and to the

son



and to the

Holy Spirit



As it was in the

beginning,

is



now



and

ever



shall

be



World

without



end



Amen

ST CATHERINE'S AMAZON WISH LIST



Dear parents and carers,

The school has opened an Amazon Wish list account to enable us to provide even more for our children in school. Please see link at bottom of page. There is also a link on the 'Quick Links' section on the homepage of the school website.

If you, or friends or family, are able to contribute please do so.

Once again your support is greatly appreciated.

Mr Doherty

<https://amzn.eu/12fuUtV>



WOW Walk to school challenge

We are excited to take part in this year's **WOW walk to school challenge** which is an initiative from Living Streets, the UK charity for everyday walking, to help as many children as possible experience the benefits of walking to school.

What are the benefits of walking to school?

- Children feel happier and healthier.
- They arrive to school refreshed and ready to learn.
- Helps reduce congestion and pollution at the school gates.



Your children will self-report how they get to school every day. If they travel actively (walk/wheel, cycle, scoot or park and stride) **at least once a week for a month**, they will be rewarded with a badge.

Park and Stride – If driving, park and stride can help your child earn their WOW badges. **Park at least 10 minutes away from the school and walk the remaining journey.** If using public transport, hop off at least 10 minutes away and walk. Use the map below to see suggestions for areas to park and stride. Parking in the blue zone, where permitted, and walking the rest of the way will count as park and stride.

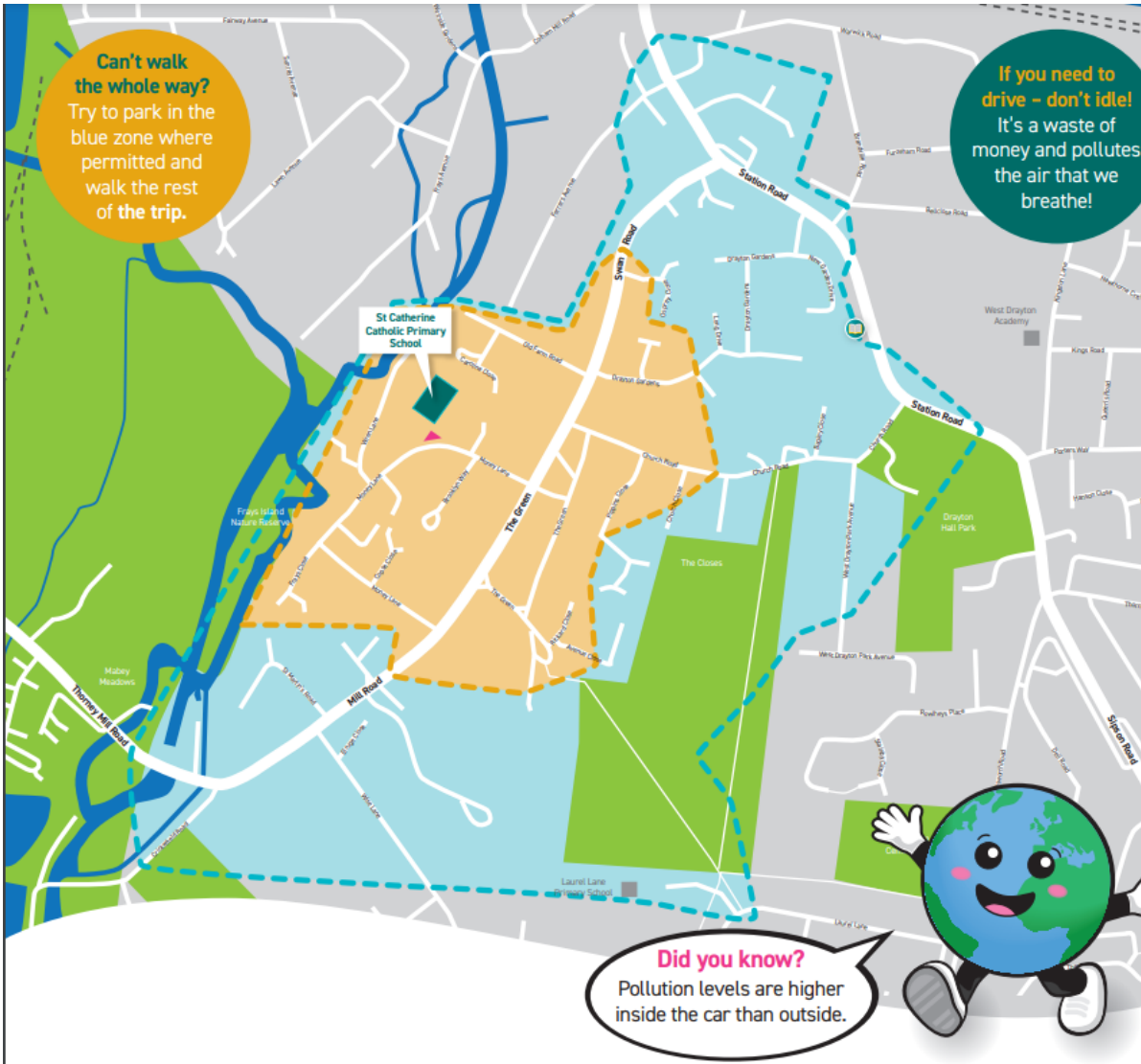
Your children have been introduced to the initiative today and are excited to get going! There are 11 badges to be earned from September 2024 – July 2025. Each badge has been designed by a pupil from across the UK as part of the annual WOW Badge Design Competition. WOW 2024/25 encourages pupils to Walk with Imagination, with a selection of badges ranging from a Bird's Eye View to Road Surfing up for grabs. The badges are made in Cornwall from material that was otherwise destined for landfill, including fridge trays, plastic plates and yoghurt pot off-cuts.

To launch this, next week we will hold a **walk to school week** where you can earn your first badge by walking to school at least once. From the following week you will need to **walk at least once a week during each month**.

Find out more about the challenge here: <https://youtu.be/op0zWJw1Hs0>

We look forward to hearing all about your travels. Happy Walking.





Can't walk the whole way?
Try to park in the blue zone where permitted and walk the rest of the trip.

If you need to drive - don't idle!
It's a waste of money and pollutes the air that we breathe!

Did you know?
Pollution levels are higher inside the car than outside.

Skip your ride, take a stride

ST CATHERINE CATHOLIC PRIMARY SCHOOL WALK ZONE MAP

Let's make walking part of your daily routine!

- Key:**
- 5 minute walking zone
 - 10 minute walking zone
 - Bus stop
 - Zebra crossing
 - Pedestrian crossing
 - School entrance
 - Library



EXPLANATION OF TRAVEL MODES ON THE WOW TRAVEL TRACKER



Cycle: Select this icon if you have cycled all the way to school. 'Cycle' counts as an active journey and contributes towards earning a badge.

Other: This icon counts as an active travel trip and will contribute towards earning a badge. Choose this for any active journey that does not fit into the other categories.



Walk/Wheel: Select this icon if you have walked or wheeled all the way to school. We support disabled pupils and those with special educational needs to enjoy walking. This icon includes pupils walking with the use of mobility aids, including wheelchairs or wheeled walkers. 'Walk/ Wheel' counts as an active journey and contributes towards earning a badge.



Park and Stride: Park and Stride is a great way for pupils who live too far away from school to still earn a badge. Simply park the car at least 10 minutes away from school and complete the journey by foot, wheelchair, bike or scooter (any active mode of travel used to complete the journey counts!). 'Park and Stride' counts as an active journey and contributes towards earning a badge.



Bus: Select this icon if you took the bus (including school bus) or used public transport to get to school. 'Bus' does not count as an active journey, so it will not contribute towards earning a badge. If you choose to use public transport but still want to earn a badge, you can hop off at least 10 minutes from school and walk the rest of the way. If you choose to do so, instead of 'Bus' select 'Other'.



Scooter/Skate: Select this icon if you came all the way to school by scooter, skateboard, etc. 'Scooter/Skate' counts as an active journey and contributes towards earning a badge.

Driven: Select this icon if you drove all the way to school. 'Driven' does not count as an active journey so it will not contribute towards earning a badge.



Absent: Select this icon for any pupils who are absent (for every day of their absence). It is important absences are recorded correctly to give pupils a fair chance to earn a badge.

Delete: If you accidentally select the wrong travel mode, use the delete icon to clear it and start again.



Taxi: Select this icon if you travel by taxi the whole way to school. 'Taxi' does not count as an active journey so it will not contribute towards earning a badge.



Important future diary dates

Thursday 19th June - Rounders Tournament

Mon 23rd June - Fri 27th June—Year 6 PGL trip

Wed 25th June—New Reception Parents information session at 6pm

Fri 27th June—Toy Donation day for Summer Fayre/ own clothes day

Saturday 28th June—Community Stay and Play morning 10am-12 noon

Tuesday 1st July—Reception to Yr 1 transition Evening at 6pm

Tuesday 1st July—Year 3 class Mass at 2pm

Wednesday 2nd July—EYFS Sports Day in school 9-10am

Wednesday 2nd July - District Sports at Hillingdon Athletics Stadium from 4.15pm

Thursday 3rd July - Bottle Donation day for Summer Fayre/ own clothes day

Thursday 3rd July - Year 3 trip to British Museum

Thursday 3rd July—Year 5/6 transition evening including info about PGL 2026

Thursday 3rd July—Reception trip to Hounslow Urban Farm

Friday 4th July—training day (school closed)

Sunday 6th July—School Summer Fayre 12-3pm

Wed 9th Jul—Year 1,2,3 Sports Day on school playground 8.45—10am

Wednesday 9th July—Yr 2 transition to Yr 3 parents meeting at 6pm

Friday 11th July—Year 4,5,6 Sports Day on The Green (9-10.30am)

Tuesday 15th July—Leavers Mass at 9.30am

Tuesday 15th July—Optional Parents Evening 3.15pm-4.30pm

Thursday 17th July—Year 1/2 trip to The Lookout Discovery Centre

Thursday 17th July—Year 3/4 trip to WWT London Wetland Centre

Thursday 17th July—Year 6 production from 6pm

Monday 21st July—Year 6 Leavers BBQ from 1pm (parents welcome)

Tuesday 22nd July—last day of term— 1.30pm finish

