



Diary Dates

Mon 24th Feb

Beginners chess club Yrs 1-6
3-4pm

Football club Yrs 1-3
3-4pm

Tues 25th Jan

Intermediate Chess club Yrs 1-6
3-4pm

Year 1-4 multisports club
3-4pm

Irish Dancing
5-8pm

Wed 26th Feb

Year 3-6 Racket sports
3-4pm

School football match vs Ryefield (away)

Pupil attendance to date: 94.2%. Target 97%

14th February 2025

Dear Parents and Carers,

In Monday's assembly we heard the story of Jesus calling the first disciples—Simon Peter, James and John.

I explained how the story gives us great hope because we learn that we can trust in God always.

Peter and his men have caught no fish all night and doubt Jesus when he tells them to cast their nets again. But they listen and are rewarded with two boats full of fish.

In a Jubilee Year with the theme of 'Pilgrims of Hope', this story has a poignant message. We need not ever be afraid or doubt because God is with us. Just when we think it's all over, He sends a miracle.

Have a lovely half term everybody. Enjoy the break and we will see you all back at school on Monday 24th February.

Mr Doherty

Attendance

Attendance this week was 94.2%.

This week's top class for attendance was Year 3 with 95.8% attendance. Well done Yr 3.





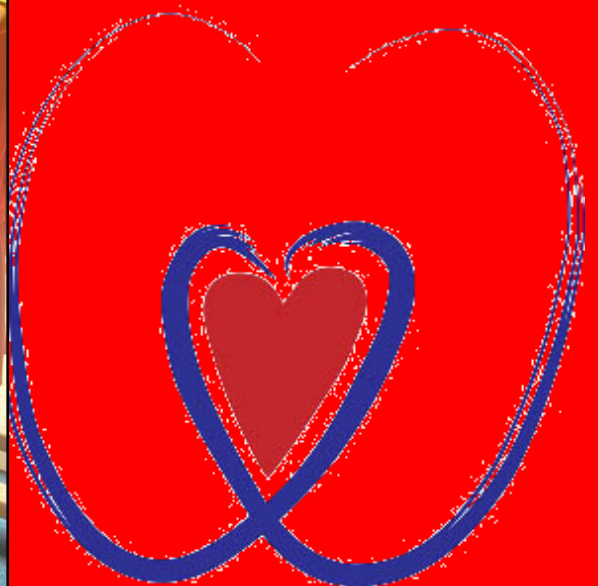
The Brompton Fountain children's charity fundraiser

Thank you, once again, for your generosity in supporting the Brompton Fountain children's charity. We managed to raise £229.37 today.

I spoke to the children in celebration assembly and explained that Catholic Social Teaching and preferential option for the poor tells us that we must think first about the needs of those who are the most vulnerable. What better way to put this into practice. Thank you!



The Brompton Fountain is a charity supporting children with serious, often life threatening, medical conditions who are under the care of Royal Brompton and Harefield hospitals.





Thurs 27th Feb

Yr 1 Milestones
Museum school
trip

Yrs 3-6
Football
3-4pm

Yrs 1-3
Craft club with
Miss Simmonds
3-4pm

Fri 28th Feb

Running club
with Mr Doherty
and Mr Papini
3-4pm

Saturday 1st March

Mixed Netball
Rally
Ryefield School
9.15am start

Football news

St Catherines 1 v St Andrews 0

Well done to the school football team who overcame a very strong St Andrews team in an intense game on Wednesday.

This was 30 minutes of concentration and hard work. The winner came from Sovereign who re-directed a fiercely struck free kick from Riley into the goal. There were more opportunities for both teams but both goalkeepers made some fine saves.

Player of the match must go to Theo, who tackled ferociously at the back and limited St Andrews to only a few shots on goal. Well done team. We are slowly climbing the table again with two games remaining and a cup match against St Bernadettes to come.

Our next game is away against Ryefield on Wednesday 26th February.

Team: David, Riley, Louie, Lukas, Theo (PoM), Sovereign, Roco, Jace





CAFOD visit

Thank you to Miriam and Helen from CAFOD, who visited the school this week to launch their Lenten appeal for 2025 (The Big Lent Walk) which will be raising money to help fight global poverty. Watch this space for our future fundraising efforts. As well as a whole school assembly, Miriam and Helen visited years 2,4 and 6 to lead workshops where the children learnt more about CAFOD's work and the link to Catholic Social Teaching.





Invacuation/ Lockdown drill

In the week after half term we will be delivering an assembly to all of the children on the procedures for a school invacuation or 'lockdown'. This would occur if pupils and staff were faced with hazards in the school grounds or outside the school, which would necessitate them being locked within the school building and/or classroom for their own safety.

This could include a civil disturbance in the local area, an intruder on the school site (with the potential to pose a risk to staff and pupils in the school) or a warning being received regarding a risk locally, of air pollution or chemical spill.

In assembly these potential risks will be explained in an age related way. The children will be told that they may need to sit or lie (silently) under tables in the event of certain types of invacuation. This invacuation/ lockdown will be practiced in school ahead of a whole school drill, just as we prepare for a fire. This drill will happen in the week commencing 3rd March. If you have any concerns ahead of this please contact the office in the first instance: office@stcatherine.co.uk

Thank you for your cooperation

World Book Day costume donation

We would be really grateful for any World Book Day costumes that you no longer need. Please can you bring these into school from Monday 24th February. A donation box will be left on the main playground. They will then be available for families to use for World Book Day on 6th March 2025.

The children have been learning about Care of Creation as part of their Catholic Social Teaching and this is a lovely way to demonstrate care of creation in action.

Thank you for your support.

Mrs Phaure



World Book Day 2025



St. Catherine Catholic Primary School
Money Lane
West Drayton
UB7 7NX
Telephone: 01895 442839
Email: office@stcatherine.co.uk
Website: stcatherineprimary.co.uk

Friday 14th February 2025

Dear Parents,

On Thursday 6th March 2025, we will be celebrating World Book Day. The theme for this year's World Book Day Event is Read Your Way. The aim of this is to promote:

- Regular reading at home and school.
- The benefits of listening to stories e.g. podcasts and audio books.
- Reading anywhere and anytime e.g. on trains, in an armchair, in bed etc.
- Reading materials that the children enjoy and are interested in.
- Sharing books and reading experiences e.g. with parents and friends.

During the day we have a range of activities planned for the children including a special assembly, a book token competition, trade a teacher where children will be taught a fun activity from a different teacher in the school and a chance to dive into book related activities.

To make this wonderful day even more special, we would like the children to come into school dressed as their favourite book character or author. For example, they could come dressed as an animal from 'Dear Zoo' (in a onesie), a character from 'Goosebumps' reusing your Halloween outfit or in your pyjamas and slippers with your favourite bedtime story.

Please click on the link below for further information and activities about World Book Day.

<https://www.worldbookday.com/families/>

Thank you for your continued support and enthusiasm for reading.

Yours Sincerely

Mrs G Phaure

Assistant Head



WORLD
**BOOK
DAY**

6 MARCH 2025



READ YOUR WAY



Sponsored by

**NATIONAL
BOOK
tokens**

Find out more at worldbookday.com

Changing lives through a love of books and reading

World Book Day® is a registered charity (no. 1079257) and registered company (no. 07783095) in the UK.
World Book Day and the associated logo are the registered trademarks of World Book Day Limited.

 ILLUSTRATED BY **WIM TROON**



Diary Dates

Mon 24th Feb

Beginners chess club Yrs 1-6
3-4pm

Football club
Yrs 1-3
3-4pm

Tues 25th Jan

Intermediate Chess club
Yrs 1-6
3-4pm

Year 1-4 multisports club
3-4pm

Irish Dancing
5-8pm

Wed 26th Feb

Year 3-6 Racket sports
3-4pm

School football match vs Ryefield (away)

Pupil attendance to date: 94.2%. Target 97%

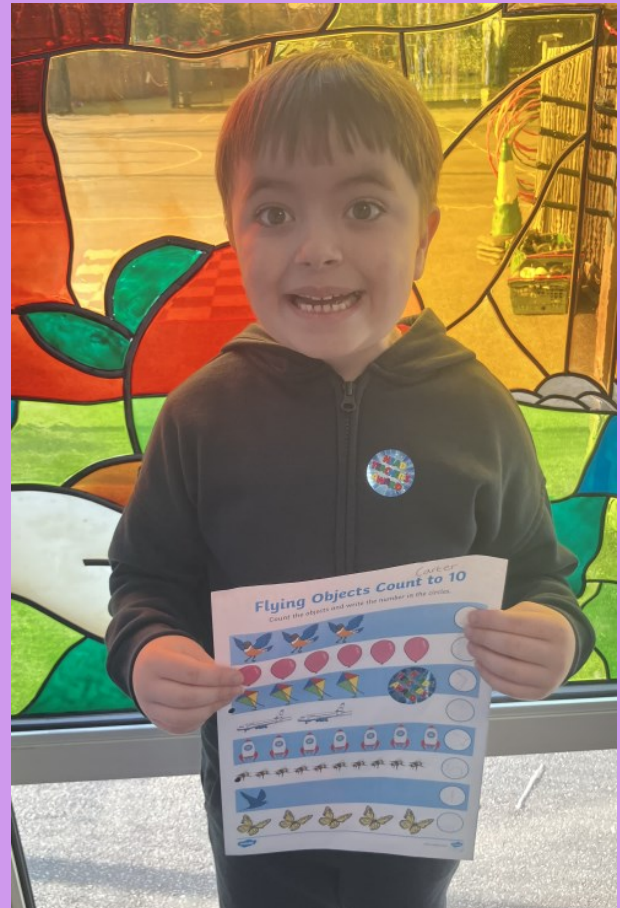
14th February 2025

ARK award



Well done to Dallas, who received an Act of Random Kindness award for how she treats other children in school. What was extra special about this award is that 3 different members of staff recognised the same qualities in Dallas and wanted to have it acknowledged. Well done Dallas. It is these little acts of kindness that make our school such a special place.

Number 1!



Well done to Carter, who came to see me with Miss Todd because of the amazing progress he is making with writing numbers. Carter has worked really hard and I know that Miss Todd was very proud of him. Well done Carter.



Diary Dates

Thurs 27th Feb

Yr 1 Milestones
Museum school
trip

Yrs 3-6
Football
3-4pm

Yrs 1-3
Craft club with
Miss Simmonds
3-4pm

Fri 28th Feb

Running club
with Mr Doherty
and Mr Papini
3-4pm

Saturday 1st March

Mixed Netball
Rally
Ryefield School
9.15am

Pupil attendance to date: 94.2%. Target 97%

14th February 2025

Chess players of the week

Well done to the following children for being awarded chess player of the week over the last 2 weeks:

Luana for a win where she was a Queen & 2 Rooks up & impressively check mated the King.

Elliott for a good game & win against an older and more experienced opponent.

Deivi for his match against David H which he lost but put up a good fight in only his second week. Deivi was also very helpful in setting up the demonstration board & putting away the equipment.

Lucius for a very good game & win against one of his classmates and Alexandra for another great win. She impressively built up a good position & won enough pieces to win the game.

Champions feast!



Our League winning netball squad enjoyed a feast from Dominoes pizza on Friday as a reward for an incredible season.

Can I thank Mrs Sharp for paying for the food and to Mr Carroll for giving us a fabulous discount and for delivering it personally! We are so fortunate to have such generous parents. It is very much appreciated.

Well done team once again! This was well deserved for all of your efforts.





Diary Dates

Mon 24th Feb

Beginners chess club Yrs 1-6
3-4pm

Football club Yrs 1-3
3-4pm

Tues 25th Jan

Intermediate Chess club Yrs 1-6
3-4pm

Year 1-4 multisports club
3-4pm

Irish Dancing
5-8pm

Wed 26th Feb

Year 3-6 Racket sports
3-4pm

School football match vs Ryefield (away)

Pupil attendance to date: 94.2%. Target 97%

14th February 2025

FANTASTIC PHONICS!

Well done to Joseph, who achieved full marks in his phonics test this week. It was lovely to see how proud Miss Hobbs and Mrs Phaure were of you. You have worked so hard to achieve this. Congratulations.



After school football clubs

Can we please ask that children attending after school football clubs **do not** wear studded boots or moulds. This is for the protection of other children as we have had injuries caused in the past. Although not compulsory, we would advise all children to wear shinpads if possible for extra protection. Thank you for your co operation. Mr Doherty



Exclusion period after illness

Can I please remind you that if your child vomits or has diarrhoea, they should not return to school for a minimum of 48 hours from the last incident. This is **VERY** important in preventing the spread of further infection to children and staff.



Diary Dates

Thurs 27th Feb

Yr 1 Milestones
Museum school
trip

Yrs 3-6
Football
3-4pm

Yrs 1-3
Craft club with
Miss Simmonds
3-4pm

Fri 28th Feb

Running club
with Mr Doherty
and Mr Papini
3-4pm

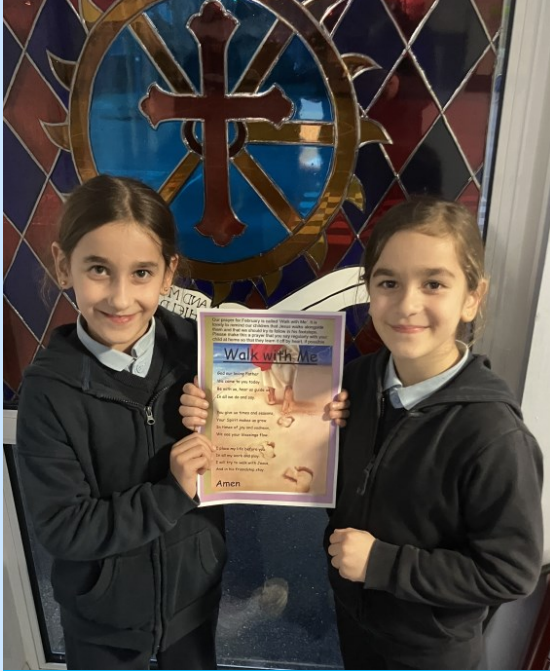
Saturday 1st March

Mixed Netball
Rally
Ryefield School
9.15am

Pupil attendance to date: 94.2%. Target 97%

14th February 2025

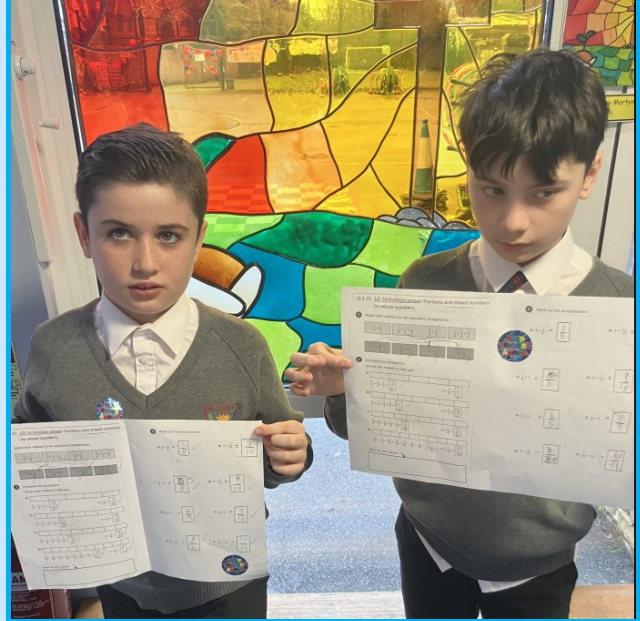
Well done!



Well done to Sarah Lucy and Mary-Claire, who were able to recite, by heart, this months prayer—'Walk with me'. It is so lovely to know that our children have so many prayers they can use and to know that they are talking to God regularly. Well done girls. I was so impressed.



Fab Fractions



Well done to John and Jacob, who were sent to see me by Mrs Carter because of their wonderful work in maths on multiplying fractions using fraction bars. Fantastic work boys and keep up the effort.





Mon 24th Feb

Beginners chess club Yrs 1-6
3-4pm

Football club
Yrs 1-3
3-4pm

Tues 25th Jan

Intermediate Chess club
Yrs 1-6
3-4pm

Year 1-4 multisports club
3-4pm

Irish Dancing
5-8pm

Wed 26th Feb

Year 3-6 Racket sports
3-4pm

School football match vs Ryefield (away)

Pupil attendance to date: 94.2%. Target 97%

14th February 2025

Quilling Queen

It is so lovely when we find out that our children have special interests and talents outside of the classroom. This week Cailyn shared with us her interest in quilling. Quilling is an art form that involves using strips of paper that are looped, rolled, curled and twisted to create different shapes. These are then glued together to create decorative designs. I think you will all agree that these look **AMAZING!** Well done Cailyn.



The attached flyer was sent home with the children this week. BE ACTIVE will be in school every day of half term. The more children that attend the more the school receives. Thank you.



BEACTIVE //

FEBRUARY HALF TERM CAMP

SPECIALIST MULTI- SPORT HOLIDAY CAMP //

USE CODE SIB10 AT CHECKOUT FOR 10% SIBLING DISCOUNT

EARLY BIRD PRICE
BOOK NOW BEFORE FRIDAY 7th FEBRUARY TO AVOID PAYING £25 PER DAY



For Children aged 4-12 years
Monday 17th February – Friday 21st February
PLEASE SEE DATES ON THE BACK OF THE FLYER FOR EACH INDIVIDUAL SCHOOL

St John's C of E School | St Joseph's Primary School | Ruislip Gardens Primary School | St Catherine's Primary School | Belmont Primary School | Roxbourne Primary School



DAILY COSTS STANDARD DAY
9.00-3pm- £20

ADDITIONAL DAILY COSTS* LATE PICK UP
3.00-3.30pm- £5
* Late pickup not available at St Catherine's



Call 07715 847 132 / 07540 984 154

Email: info@beactivesports.co.uk | www.beactivesportsandclubs.co.uk/book-online

@BeActiveClubs @Beactive_20 @BeActive



BE ACTIVE SPORTS AND CLUBS PROVIDES CHILDREN AND YOUNG PEOPLE THE OPPORTUNITY TO PARTICIPATE IN A WIDE VARIETY OF ACTIVITIES THROUGHOUT THE DAY, LEAVING THEM WANTING TO COME BACK FOR MORE.

- FOOTBALL
- BASKETBALL
- DODGEBALL
- CRICKET
- ARTS AND CRAFTS
- TAG RUGBY
- HOCKEY
- ATHLETICS
- NERF

LOCATIONS //

Hillingdon	Harrow	
St Catherine Primary School Money Lane, UB7 7NX	Roxbourne Primary Torbay Rd HA2 9Q	St Joseph's Primary School Dobbin Close, HA3 7LP
Monday 17th February - Friday 21st February	Monday 17th February - Friday 21st February	Wednesday 19th February - Friday 21st February
Ruislip Gardens Primary School Stafford Road Ruislip Gardens, Ruislip HA4 6PD	Belmont School Hibbert Road HA3 7JT	St John's C of E School 127 Stanmore Hill, HA7 3FD
Tuesday 18th February - Thursday 20th February	Monday 17th February - Wednesday 19th February	Monday 17th February - Friday 21st February

HOW TO BOOK //

Visit our website
<https://www.beactivesportsandclubs.co.uk/book-online>
Select the venue you would like your child to attend
Select the chosen dates that suit you
Confirm your selection and pay via our secure online system



Scan with your smart phone

If you are having trouble booking online or would like more information regarding our holiday provision please contact us at:
Email: info@beactivesports.co.uk or Call: 07715847132

@BeActiveClubs @Beactive_20 @BeActive

Is your child interested in learning a musical instrument. The Hillingdon Music Service currently have spaces for new musicians. Please see letter below.....



Supported using public funding by



ARTS COUNCIL
ENGLAND

Instrumental and Vocal Tuition with Hillingdon Music Service

Learning to sing or play an instrument can help concentration, confidence and coordination as well as being great fun!

If your child goes to a school in the borough or lives in the borough, we can arrange for them to have music lessons during the school day at their school, or on some occasions, at one of our centres at various locations across the borough. Lesson times are set by the school and our teachers to fit with their timetables so exact lesson times will vary from school to school. We aim to deliver 10 lessons each term.

To find out more and watch demonstration videos about these lessons visit www.hillingdon.gov.uk/startmusic

Tuition is available on a range of instruments including woodwind, brass, strings, drum kit, piano, guitar and voice.

There is also the opportunity to play and sing with others in choirs, bands, orchestras, ukulele and steel pan groups. See more at <https://www.hillingdon.gov.uk/musicschool>

Fees and charges are available on our website, including reduced charges for those who are unable to meet the cost.



www.hillingdon.gov.uk

ST CATHERINE'S AMAZON WISH LIST



Dear parents and carers,

The school has opened an Amazon Wish list account to enable us to provide even more for our children in school. Please see link at bottom of page. There is also a link on the 'Quick Links' section on the homepage of the school website.

If you, or friends or family, are able to contribute please do so.

Once again your support is greatly appreciated.

Mr Doherty

<https://amzn.eu/12fuUtV>

Our prayer for February is called 'Walk with Me'. It is lovely to remind our children that Jesus walks alongside them and that we should try to follow in his footsteps. Please make this a prayer that you say regularly with your child at home so that they learn it off by heart, if possible.

Walk with Me



God our loving Father
We come to you today.
Be with us, hear us guide us
In all we do and say.

You give us times and seasons,
Your Spirit makes us grow.
In times of joy and sadness,
We see your blessings flow.

I place my life before you
In all my work and play.
I will try to walk with Jesus,
And in his friendship stay.

Amen



WOW Walk to school challenge

We are excited to take part in this year's **WOW walk to school challenge** which is an initiative from Living Streets, the UK charity for everyday walking, to help as many children as possible experience the benefits of walking to school.

What are the benefits of walking to school?

- Children feel happier and healthier.
- They arrive to school refreshed and ready to learn.
- Helps reduce congestion and pollution at the school gates.



Your children will self-report how they get to school every day. If they travel actively (walk/wheel, cycle, scoot or park and stride) **at least once a week for a month**, they will be rewarded with a badge.

Park and Stride – If driving, park and stride can help your child earn their WOW badges. **Park at least 10 minutes away from the school and walk the remaining journey.** If using public transport, hop off at least 10 minutes away and walk. Use the map below to see suggestions for areas to park and stride. Parking in the blue zone, where permitted, and walking the rest of the way will count as park and stride.

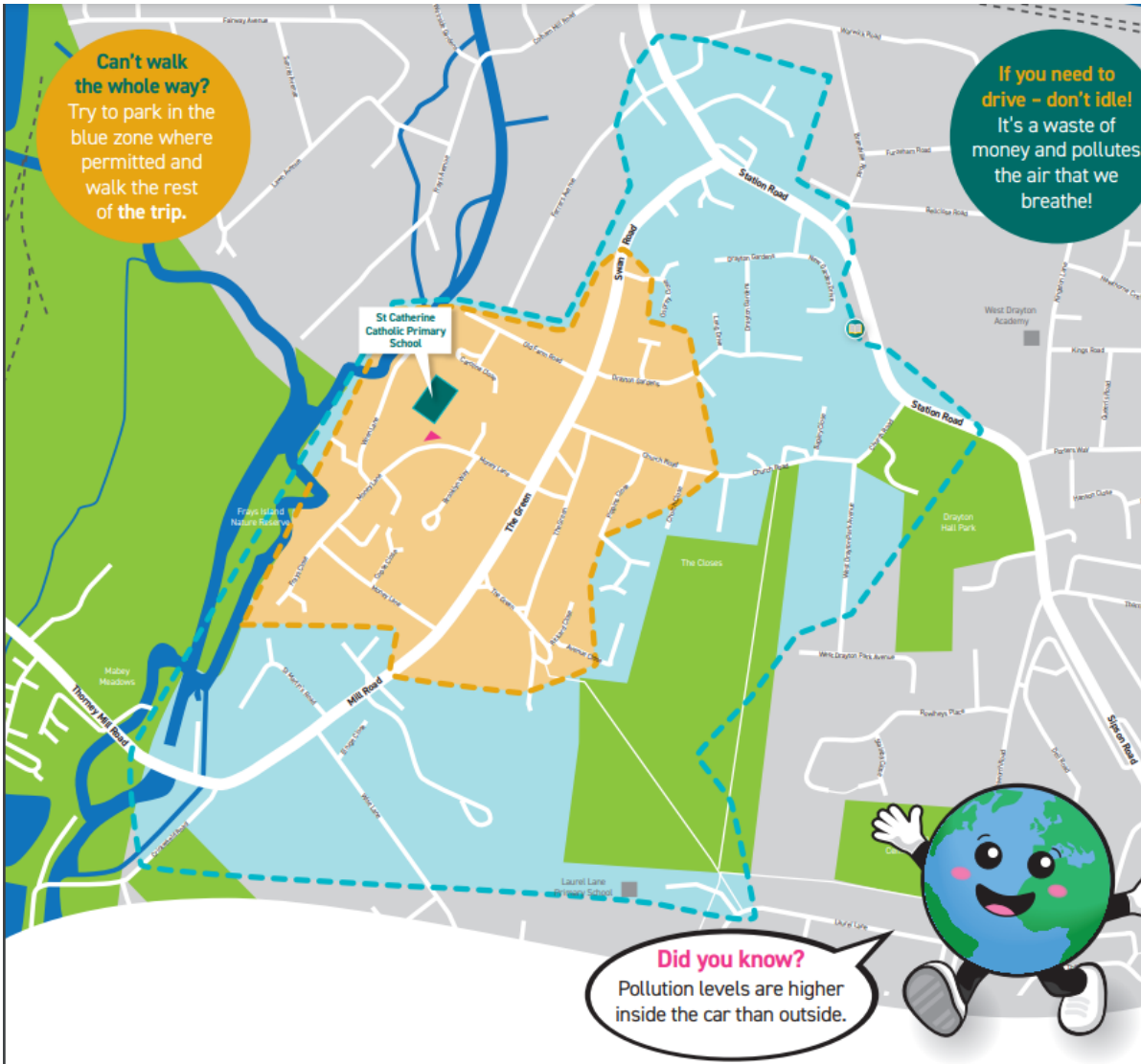
Your children have been introduced to the initiative today and are excited to get going! There are 11 badges to be earned from September 2024 – July 2025. Each badge has been designed by a pupil from across the UK as part of the annual WOW Badge Design Competition. WOW 2024/25 encourages pupils to Walk with Imagination, with a selection of badges ranging from a Bird's Eye View to Road Surfing up for grabs. The badges are made in Cornwall from material that was otherwise destined for landfill, including fridge trays, plastic plates and yoghurt pot off-cuts.

To launch this, next week we will hold a **walk to school week** where you can earn your first badge by walking to school at least once. From the following week you will need to **walk at least once a week during each month**.

Find out more about the challenge here: <https://youtu.be/op0zWJw1Hs0>

We look forward to hearing all about your travels. Happy Walking.





Can't walk the whole way?
Try to park in the blue zone where permitted and walk the rest of the trip.

If you need to drive - don't idle!
It's a waste of money and pollutes the air that we breathe!

Did you know?
Pollution levels are higher inside the car than outside.

skip your ride, take a stride

ST CATHERINE CATHOLIC PRIMARY SCHOOL WALK ZONE MAP

Let's make walking part of your daily routine!

- Key:**
- 5 minute walking zone
 - 10 minute walking zone
 - Bus stop
 - Zebra crossing
 - Pedestrian crossing
 - School entrance
 - Library



EXPLANATION OF TRAVEL MODES ON THE WOW TRAVEL TRACKER



Cycle: Select this icon if you have cycled all the way to school. 'Cycle' counts as an active journey and contributes towards earning a badge.

Other: This icon counts as an active travel trip and will contribute towards earning a badge. Choose this for any active journey that does not fit into the other categories.



Walk/Wheel: Select this icon if you have walked or wheeled all the way to school. We support disabled pupils and those with special educational needs to enjoy walking. This icon includes pupils walking with the use of mobility aids, including wheelchairs or wheeled walkers. 'Walk/ Wheel' counts as an active journey and contributes towards earning a badge.



Park and Stride: Park and Stride is a great way for pupils who live too far away from school to still earn a badge. Simply park the car at least 10 minutes away from school and complete the journey by foot, wheelchair, bike or scooter (any active mode of travel used to complete the journey counts!). 'Park and Stride' counts as an active journey and contributes towards earning a badge.



Bus: Select this icon if you took the bus (including school bus) or used public transport to get to school. 'Bus' does not count as an active journey, so it will not contribute towards earning a badge. If you choose to use public transport but still want to earn a badge, you can hop off at least 10 minutes from school and walk the rest of the way. If you choose to do so, instead of 'Bus' select 'Other'.



Scooter/Skate: Select this icon if you came all the way to school by scooter, skateboard, etc. 'Scooter/Skate' counts as an active journey and contributes towards earning a badge.

Driven: Select this icon if you drove all the way to school. 'Driven' does not count as an active journey so it will not contribute towards earning a badge.



Absent: Select this icon for any pupils who are absent (for every day of their absence). It is important absences are recorded correctly to give pupils a fair chance to earn a badge.

Delete: If you accidentally select the wrong travel mode, use the delete icon to clear it and start again.



Taxi: Select this icon if you travel by taxi the whole way to school. 'Taxi' does not count as an active journey so it will not contribute towards earning a badge.





St Catherine Catholic Primary School and Nursery

*Our next community Stay and Play morning
for Nursery and Reception aged children
and siblings will be held on:*



Saturday 15th March

10am until 12 noon

This event is open to children children
currently attending our school and children in
the local community. If you have a questions
please contact our office:

office@stcatherine.co.uk

telephone: 01895442839

Important future diary dates

Monday 17th February—Friday 21st Feb: Half term

Thursday 27th February—Year 1 Milestones Museum trip

Saturday 1st March—Mixed Netball Rally

Tuesday 4th March—FSCS Sponsored pancake flip

Wednesday 5th March—Start of Lent

Thursday 6th March—World Book Day

Saturday 8th March—Girls Netball Rally

Saturday 15th March - Community Stay and Play morning

Wednesday 19th March—Junior Citizen event at Brunel (Year 6)

Tuesday 1st April—Parents Evening (3.30pm-5.30pm)

Wednesday 2nd April—FSCS Easter Egg Hunt

Thursday 3rd April: Year 6 Passion Play at 9am

Thursday 3rd April—Parents Evening (4pm-7pm)

Thursday 3rd April—Borough Cross Country

Friday 4th April—Last Day of term

Tuesday 22nd April—Back to school / start of Summer term

