



Diary Dates



NEWSLETTER

Mon 10th Feb

Beginners chess club Yrs 1-6
3-4pm

Football club Yrs 1-3
3-4pm

Tues 11th Jan

Intermediate Chess club Yrs 1-6
3-4pm

Year 1-4 multisports club
3-4pm

Irish Dancing
5-8pm

Wed 12th Feb

Year 3-6 Racket sports
3-4pm

School football match vs St Andrews on The Green

Pupil attendance to date: 94.4%. Target 97%

7th February 2025

Dear Parents and Carers,

In Monday's assembly we heard the story of Jesus being presented at the Temple. Simeon calls the baby 'a light'.

I explained to the children that the light is God working in us which leads us to joy, peace and truth. Our job is to reflect God's love into the world. See if your child can remember the story of the lighthouse keepers little candle, who in the lighthouse keeper's hands becomes a light that guides ships to safety in the darkness. The little candle doubts himself but learns to place his trust in the lighthouse keeper who represents God.

In the Jubilee year (Pilgrims of Hope) Simeon and Anna are wonderful examples of trust. They had been waiting patiently for Jesus for many years and never gave up hope.

Have a lovely weekend everybody

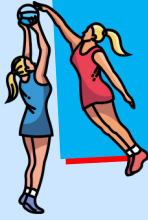
Mr Doherty

Attendance

Attendance this week was 94.4%. Up 0.1% from last week.

This week's top classes for attendance were Year 4 and Reception at 98%. Well done Yr 4 and Reception!





NEWSLETTER

Pupil attendance to date: 94.4%. Target 97%

7th February 2025

We are the (netball) champions!!!!

Hermitage 0 v St Catherine 19

A huge congratulations to our team of INVINCIBLES, for a season without compare. Our team won all of their matches this year and didn't concede a single goal. What an achievement! I'm sure this will never be surpassed. Thank you to Sandra and Mr Lynam for all the hard work that has gone on behind the scenes to get our team playing like they do and well done girls, most importantly, for all of your hard work and attitude all year. We are all so very proud of you.



The Invincibles squad: Emmie, Sophia, Amira Kate, Karolina, Katherine, Sadie, Victoria, Noelle and Natalie.

W6 D0 L0 Goals for 118 Goals against 0



St Catherine Catholic Primary School

FSCS News



7th February 2025

**Valentine's
DISCO**

FOOD | MUSIC | GAMES

FEBRUARY **14** 3 PM - 5 PM

IN THE PARISH HALL
MONEY LANE, WEST DRAYTON, UB77NX

£2 ENTRY
ADULTS AND
UNDER 3 FREE

CHILDREN MUST BE ACCOMPANIED AT ALL TIMES

Valentine's Disco Tickets now on Sale!

Get your disco tickets fuss-free, now on ParentPay, thanks to the Office for setting up.



Tickets will also be available for sale on the playground next week.

Can you help?

We need you—your support is crucial to make this event a smashing success. We're looking for enthusiastic volunteers to help run stalls and create an unforgettable disco experience.

Coming up...

Friday 14 February Valentine's Disco

Bring in a donation for the Brompton Fountain Children's Charity, and wear red clothing and accessories to school and also be party ready.

Tuesday 4 March Pancake Flip and Shuttle Run at School



Pupil attendance to date: 94.4%. Target 97%

7th February 2025

Thurs 13th Feb

Yrs 3-6
Football
3-4pm

Yrs 1-3
Craft club with
Miss Simmonds
3-4pm

Fri 14th Feb

Wear red day in
support of the
Royal Brompton

FSCS
Valentines Disco
3-5pm

Football news

St Marys 0 v St Catherines 3

Well done to the school football team who got back to winning ways with a superb win against St Marys on Wednesday. Two outstanding goals (one with his right foot and one with his head) for our team captain Riley and a third by Louie saw off St Marys. This was Louie's first ever goal for the school team and saw him awarded player of the match. Mr Casse and I thought that the whole team were outstanding. Next week we play St Andrews at home.

Team: David, Riley, Louie (PoM) , Lukas, Emmie, Theo, Sovereign, Roco, Jace



Can I also say a huge thank you to Ms McCormack and Explorers FC for donating the new football kits, which I think you will all agree look amazing. Not only do we look like France but played like them on Wednesday!



NEWSLETTER

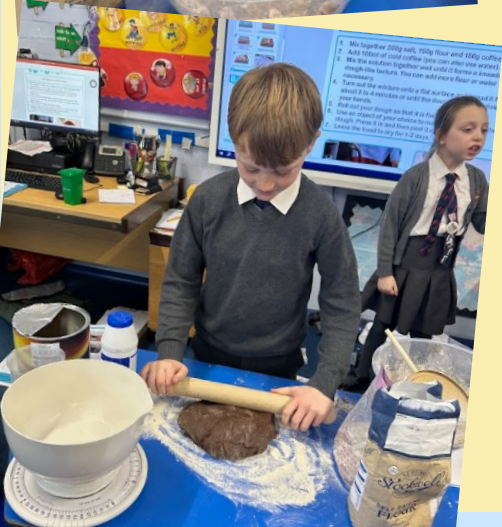
Pupil attendance to date: 94.4%. Target 97%

7th February 2025

FANTASTIC FOSSILS IN YEAR 3

This week in Year 3, we've been exploring fossils as part of our Rocks and Soils unit in science. The children were full of enthusiasm as we created our own fossil imprints. We made dough using salt, coffee, and flour, rolled it out, and pressed seashells into it to form our imprints. A special mention goes to Jenson for sharing insightful thoughts, perhaps a future budding paleontologist! Shiloh, Ciaran and Oskar also impressed us with their curious scientific questions, showing great enthusiasm for discovery.

Mr. Reardon





NEWSLETTER

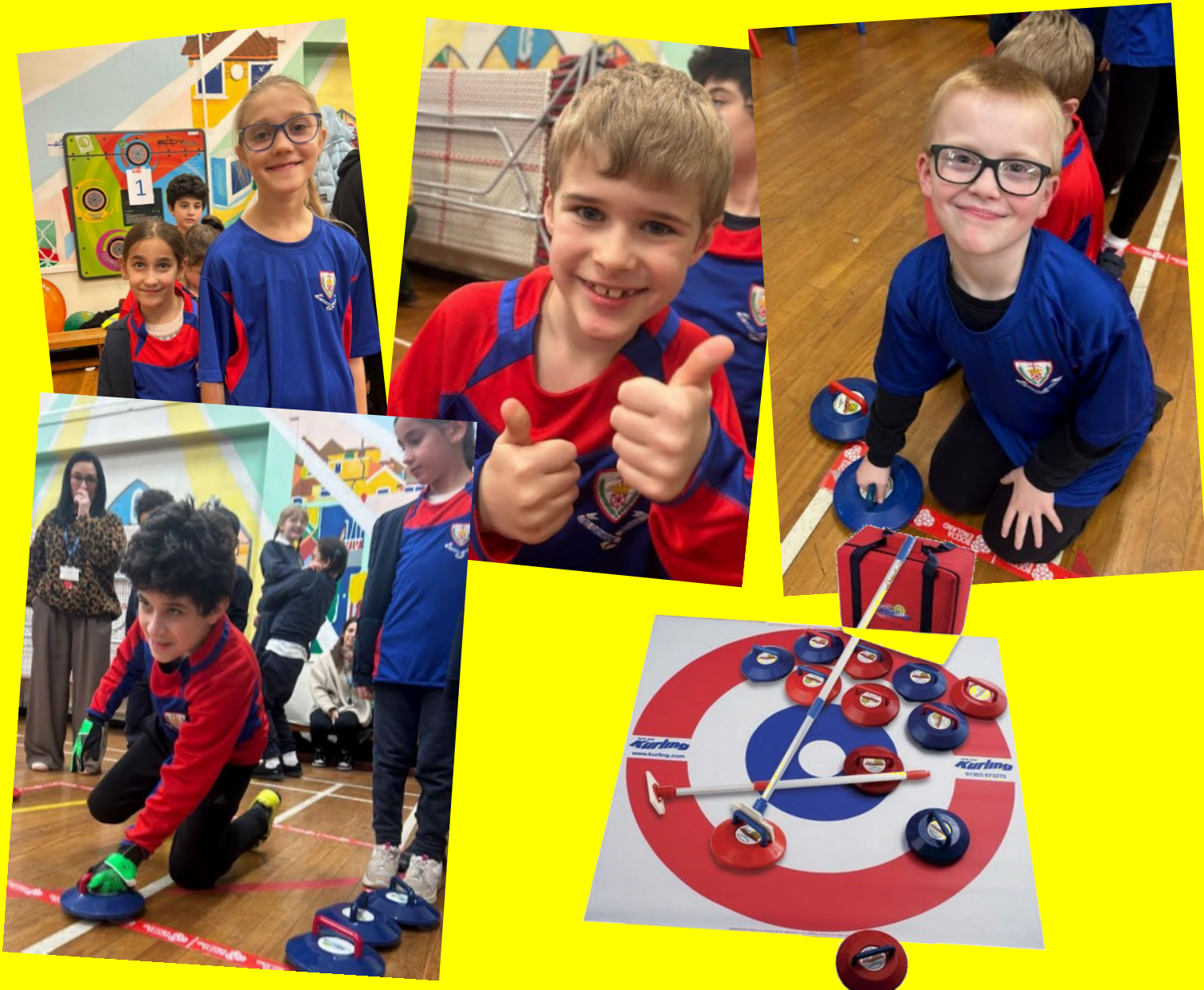
Pupil attendance to date: 94.3%. Target 97%

7th February 2025

NEW AGE CURLING EVENT

Year 3 and 4 went to a New Age Curling tournament today to compete against 8 other schools. We started off incredibly strong winning the first game! The opponents became tougher however and we finished with one win, one draw and one loss. This meant that we played for 3rd place. Saint Catherine just missed out on a medal but thoroughly enjoyed the morning. Well done to all of the children. Mr Lynam

Team: Nicole, Sarah Lucy, Artur, Anthony, Leon and Belle





NEWSLETTER

Pupil attendance to date: 94.4%. Target 97%

7th February 2025

Year 2 trip to the Grand Union Canal

This week Year 2 went on a trip to Cowley Lock because we have been learning all about canals for our History topic. It was very exciting. We travelled on the bus and walked through the park where we were met by Olivia's grandad who lives on a canal boat. We got to open and close the locks and watch the boats go through. It was great seeing all of what we have been learning about come to life. We even got to peek inside and see where Grandad Peter lives. All of the children were very sensible and had a fantastic morning. Ms Simmonds





NEWSLETTER

Diary Dates

Mon 10th Feb

Beginners chess club Yrs 1-6
3-4pm

Football club Yrs 1-3
3-4pm

Tues 11th Jan

Intermediate Chess club Yrs 1-6
3-4pm

Year 1-4 multisports club
3-4pm

Irish Dancing
5-8pm

Wed 12th Feb

Year 3-6 Racket sports
3-4pm

School football match vs St Andrews on The Green

Pupil attendance to date: 94.4%. Target 97%

7th February 2025

Can you help?

We are looking for some help in dismantling our woden gazebo on the rear playground on Saturday 1st March from 12 noon. With enough help it shouldn't take more than an hour. If you are available to help please speak to the office or email office@stcatherine.co.uk

Many thanks in advance

Exclusion period after illness

Can I please remind you that if your child vomits or has diarrhoea, they should not return to school for a minimum of 48 hours from the last incident. This is **VERY** important in preventing the spread of further infection to children and staff.

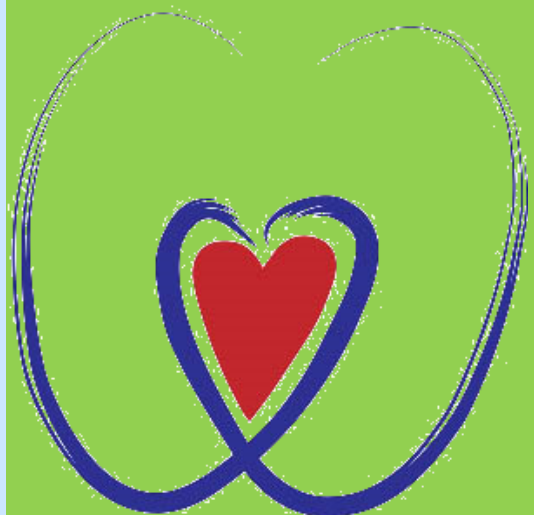
Wear red day (Friday)

Can I please remind you all that Friday is an own clothes day. Children must wear something red and we are asking for a voluntary donation of £1 (or more if you can afford it) for the Royal Brompton Fountain children's charity.

After school football clubs

Can we please ask that children attending after school football clubs **do not** wear studded boots or moulds. This is for the protection of other children as we have had injuries caused in the past. Although not compulsory, we would advise all children to wear shinpads if possible for extra protection.

Thank you for your co operation.
Mr Doherty





Thurs 13th Feb

Yrs 3-6
Football
3-4pm

Yrs 1-3
Craft club with
Miss Simmonds
3-4pm

Fri 14th Feb

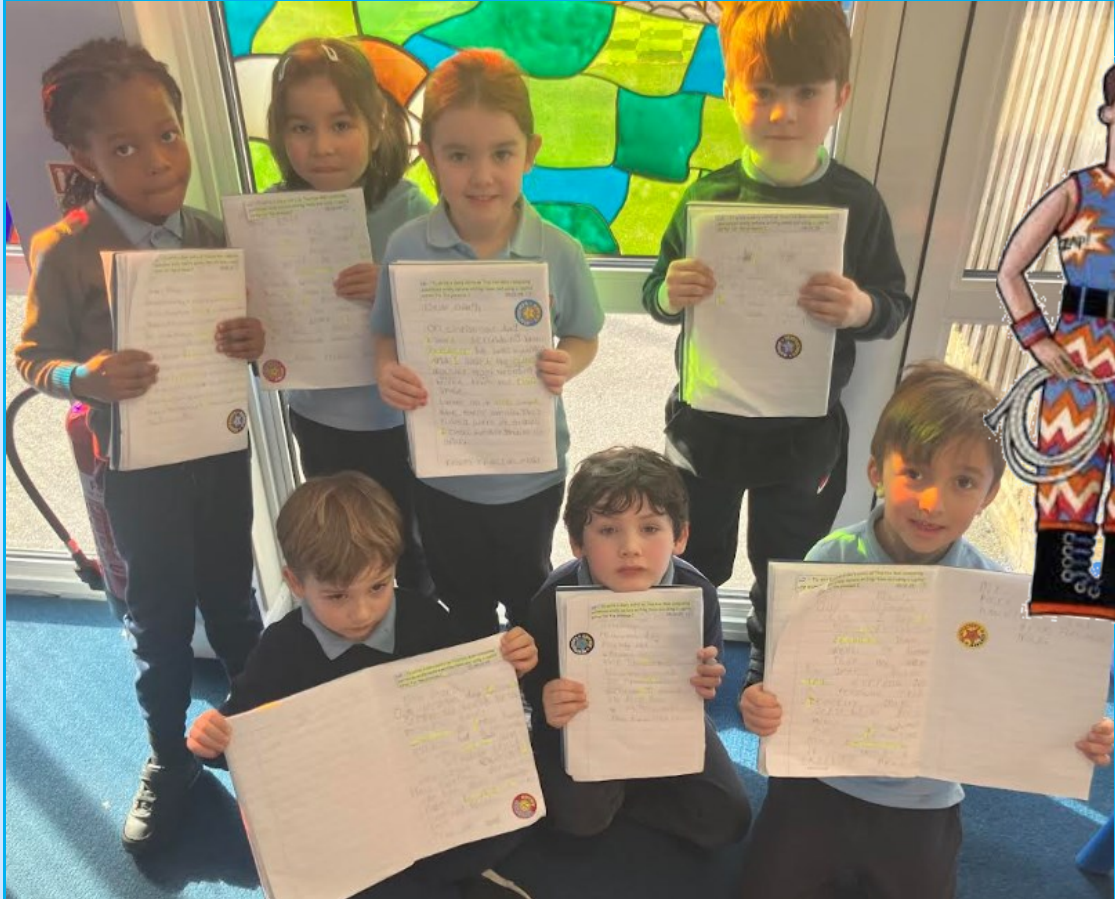
Wear red day in
support of the
Royal Brompton

FSCS
Valentines Disco
3-5pm

Pupil attendance to date: 94.4%. Target 97%

7th February 2025

Traction man fans!



Well done to the children from Year 1 who were sent to see me by Miss Hobbs with their outstanding diary entries using the pronoun 'I'. They had to detail the adventures of Traction Man (as a new toy) on Christmas day. Miss Hobbs and I were so impressed at the children's use of adjectives and conjunctions to create fantastic sentences. Great work Year 1!

The attached flyer was sent home with the children this week. BE ACTIVE will be in school every day of half term. The more children that attend the more the school receives. Thank you.



BEACTIVE //

FEBRUARY HALF TERM CAMP

SPECIALIST MULTI- SPORT HOLIDAY CAMP //

USE CODE SIB10 AT CHECKOUT FOR 10% SIBLING DISCOUNT

EARLY BIRD PRICE
BOOK NOW BEFORE FRIDAY 7th FEBRUARY TO AVOID PAYING £25 PER DAY



For Children aged 4-12 years
Monday 17th February – Friday 21st February
PLEASE SEE DATES ON THE BACK OF THE FLYER FOR EACH INDIVIDUAL SCHOOL

St John's Cof E School | St Joseph's Primary School | Ruislip Gardens Primary School | St Catherine's Primary School | Belmont Primary School | Roxbourne Primary School



DAILY COSTS STANDARD DAY
9.00-3pm- £20

ADDITIONAL DAILY COSTS* LATE PICK UP
3.00-3.30pm- £5
* Late pickup not available at St Catherine's



Call 07715 847 132 / 07540 984 154

Email: info@beactivesports.co.uk | www.beactivesportsandclubs.co.uk/book-online

@BeActiveClubs @Beactive_20 @BeActive



BE ACTIVE SPORTS AND CLUBS PROVIDES CHILDREN AND YOUNG PEOPLE THE OPPORTUNITY TO PARTICIPATE IN A WIDE VARIETY OF ACTIVITIES THROUGHOUT THE DAY, LEAVING THEM WANTING TO COME BACK FOR MORE.

- FOOTBALL
- BASKETBALL
- DODGEBALL
- CRICKET
- ARTS AND CRAFTS
- TAG RUGBY
- HOCKEY
- ATHLETICS
- NERF

LOCATIONS //

Hillingdon	Harrow	
St Catherine Primary School Money Lane, UB7 7NX	Roxbourne Primary Torbay Rd HA2 9Q	St Joseph's Primary School Dobbin Close, HA3 7LP
Monday 17th February - Friday 21st February	Monday 17th February - Friday 21st February	Wednesday 19th February - Friday 21st February
Ruislip Gardens Primary School Stafford Road Ruislip Gardens, Ruislip HA4 6PD	Belmont School Hibbert Road HA3 7JT	St John's CofE School 127 Stanmore Hill, HA7 3FD
Tuesday 18th February - Thursday 20th February	Monday 17th February - Wednesday 19th February	Monday 17th February - Friday 21st February

HOW TO BOOK //

Visit our website
<https://www.beactivesportsandclubs.co.uk/book-online>
Select the venue you would like your child to attend
Select the chosen dates that suit you
Confirm your selection and pay via our secure online system



Scan with your smart phone

If you are having trouble booking online or would like more information regarding our holiday provision please contact us at:
Email: info@beactivesports.co.uk or Call: 07715847132

@BeActiveClubs @Beactive_20 @BeActive

Is your child interested in learning a musical instrument. The Hillingdon Music Service currently have spaces for new musicians. Please see letter below.....



Supported using public funding by



ARTS COUNCIL
ENGLAND

Instrumental and Vocal Tuition with Hillingdon Music Service

Learning to sing or play an instrument can help concentration, confidence and coordination as well as being great fun!

If your child goes to a school in the borough or lives in the borough, we can arrange for them to have music lessons during the school day at their school, or on some occasions, at one of our centres at various locations across the borough. Lesson times are set by the school and our teachers to fit with their timetables so exact lesson times will vary from school to school. We aim to deliver 10 lessons each term.

To find out more and watch demonstration videos about these lessons visit www.hillingdon.gov.uk/startmusic

Tuition is available on a range of instruments including woodwind, brass, strings, drum kit, piano, guitar and voice.

There is also the opportunity to play and sing with others in choirs, bands, orchestras, ukulele and steel pan groups. See more at <https://www.hillingdon.gov.uk/musicschool>

Fees and charges are available on our website, including reduced charges for those who are unable to meet the cost.



www.hillingdon.gov.uk

ST CATHERINE'S AMAZON WISH LIST



Dear parents and carers,

The school has opened an Amazon Wish list account to enable us to provide even more for our children in school. Please see link at bottom of page. There is also a link on the 'Quick Links' section on the homepage of the school website.

If you, or friends or family, are able to contribute please do so.

Once again your support is greatly appreciated.

Mr Doherty

<https://amzn.eu/12fuUtV>

Our prayer for February is called 'Walk with Me'. It is lovely to remind our children that Jesus walks alongside them and that we should try to follow in his footsteps. Please make this a prayer that you say regularly with your child at home so that they learn it off by heart, if possible.

Walk with Me



God our loving Father
We come to you today.
Be with us, hear us guide us
In all we do and say.

You give us times and seasons,
Your Spirit makes us grow.
In times of joy and sadness,
We see your blessings flow.

I place my life before you
In all my work and play.
I will try to walk with Jesus,
And in his friendship stay.

Amen



WOW Walk to school challenge

We are excited to take part in this year's **WOW walk to school challenge** which is an initiative from Living Streets, the UK charity for everyday walking, to help as many children as possible experience the benefits of walking to school.

What are the benefits of walking to school?

- Children feel happier and healthier.
- They arrive to school refreshed and ready to learn.
- Helps reduce congestion and pollution at the school gates.



Your children will self-report how they get to school every day. If they travel actively (walk/wheel, cycle, scoot or park and stride) **at least once a week for a month**, they will be rewarded with a badge.

Park and Stride – If driving, park and stride can help your child earn their WOW badges. **Park at least 10 minutes away from the school and walk the remaining journey.** If using public transport, hop off at least 10 minutes away and walk. Use the map below to see suggestions for areas to park and stride. Parking in the blue zone, where permitted, and walking the rest of the way will count as park and stride.

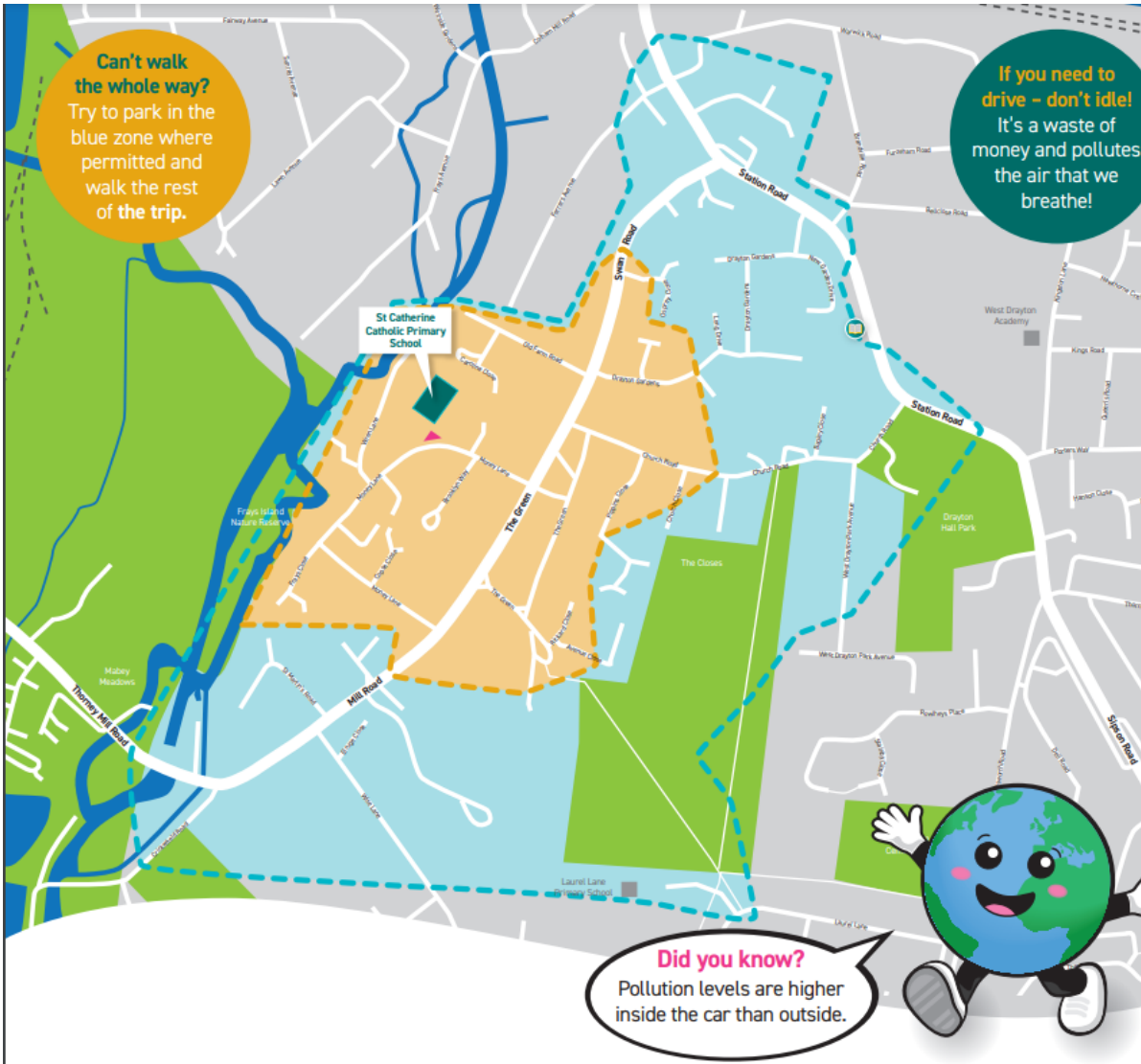
Your children have been introduced to the initiative today and are excited to get going! There are 11 badges to be earned from September 2024 – July 2025. Each badge has been designed by a pupil from across the UK as part of the annual WOW Badge Design Competition. WOW 2024/25 encourages pupils to Walk with Imagination, with a selection of badges ranging from a Bird's Eye View to Road Surfing up for grabs. The badges are made in Cornwall from material that was otherwise destined for landfill, including fridge trays, plastic plates and yoghurt pot off-cuts.

To launch this, next week we will hold a **walk to school week** where you can earn your first badge by walking to school at least once. From the following week you will need to **walk at least once a week during each month**.

Find out more about the challenge here: <https://youtu.be/op0zWJw1Hs0>

We look forward to hearing all about your travels. Happy Walking.





Can't walk the whole way?
Try to park in the blue zone where permitted and walk the rest of the trip.

If you need to drive - don't idle!
It's a waste of money and pollutes the air that we breathe!

Did you know?
Pollution levels are higher inside the car than outside.

Skip your ride, take a stride

ST CATHERINE CATHOLIC PRIMARY SCHOOL WALK ZONE MAP

Let's make walking part of your daily routine!

- Key:**
- 5 minute walking zone
 - 10 minute walking zone
 - Bus stop
 - Zebra crossing
 - Pedestrian crossing
 - School entrance
 - Library



EXPLANATION OF TRAVEL MODES ON THE WOW TRAVEL TRACKER



Cycle: Select this icon if you have cycled all the way to school. 'Cycle' counts as an active journey and contributes towards earning a badge.

Other: This icon counts as an active travel trip and will contribute towards earning a badge. Choose this for any active journey that does not fit into the other categories.



Walk/Wheel: Select this icon if you have walked or wheeled all the way to school. We support disabled pupils and those with special educational needs to enjoy walking. This icon includes pupils walking with the use of mobility aids, including wheelchairs or wheeled walkers. 'Walk/ Wheel' counts as an active journey and contributes towards earning a badge.



Park and Stride: Park and Stride is a great way for pupils who live too far away from school to still earn a badge. Simply park the car at least 10 minutes away from school and complete the journey by foot, wheelchair, bike or scooter (any active mode of travel used to complete the journey counts!). 'Park and Stride' counts as an active journey and contributes towards earning a badge.



Bus: Select this icon if you took the bus (including school bus) or used public transport to get to school. 'Bus' does not count as an active journey, so it will not contribute towards earning a badge. If you choose to use public transport but still want to earn a badge, you can hop off at least 10 minutes from school and walk the rest of the way. If you choose to do so, instead of 'Bus' select 'Other'.



Scooter/Skate: Select this icon if you came all the way to school by scooter, skateboard, etc. 'Scooter/Skate' counts as an active journey and contributes towards earning a badge.

Driven: Select this icon if you drove all the way to school. 'Driven' does not count as an active journey so it will not contribute towards earning a badge.



Absent: Select this icon for any pupils who are absent (for every day of their absence). It is important absences are recorded correctly to give pupils a fair chance to earn a badge.

Delete: If you accidentally select the wrong travel mode, use the delete icon to clear it and start again.



Taxi: Select this icon if you travel by taxi the whole way to school. 'Taxi' does not count as an active journey so it will not contribute towards earning a badge.





St Catherine Catholic Primary School and Nursery

*Our next community Stay and Play morning
for Nursery and Reception aged children
and siblings will be held on:*



Saturday 15th March

10am until 12 noon

This event is open to children children
currently attending our school and children in
the local community. If you have a questions
please contact our office:

office@stcatherine.co.uk

telephone: 01895442839

Important future diary dates

Friday 14th February: Wear red own clothes day—donations to the Brompton Fountain charity

Monday 17th February—Friday 21st Feb: Half term

Saturday 1st March—Mixed Netball Rally

Tuesday 4th March—FSCS Sponsored pancake flip

Thursday 6th March—World Book Day

Saturday 8th March—Girls Netball Rally

Saturday 15th March - Community Stay and Play morning

Wednesday 19th March—Junior Citizen event at Brunel (Year 6)

Tuesday 1st April—Parents Evening (3.30pm-5.30pm)

Wednesday 2nd April—FSCS Easter Egg Hunt

Thursday 3rd April: Year 6 Passion Play at 9am

Thursday 3rd April—Parents Evening (4pm-7pm)

Thursday 3rd April—Borough Cross Country

Friday 4th April—Last Day of term

Tuesday 22nd April—Back to school / start of Summer term

